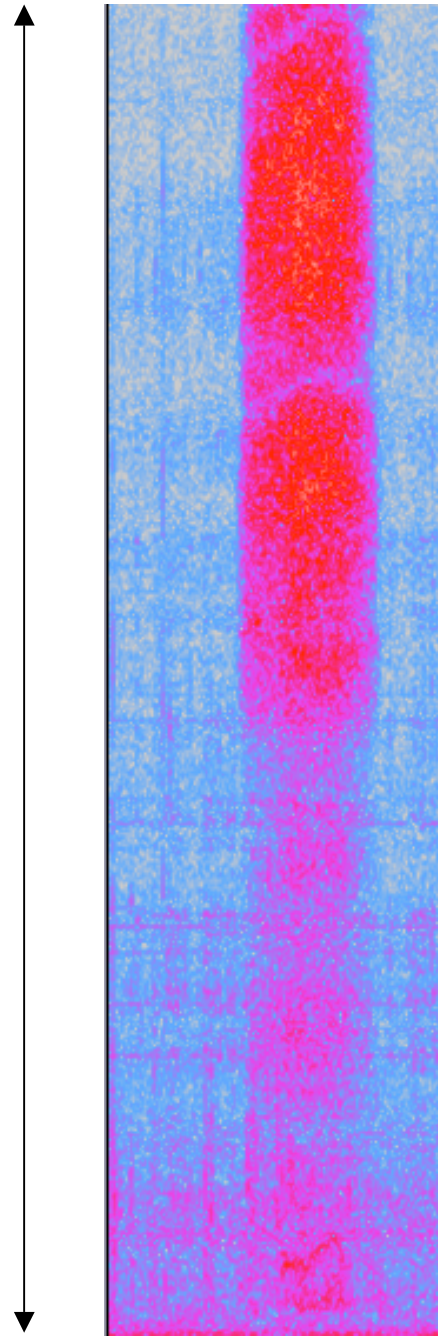
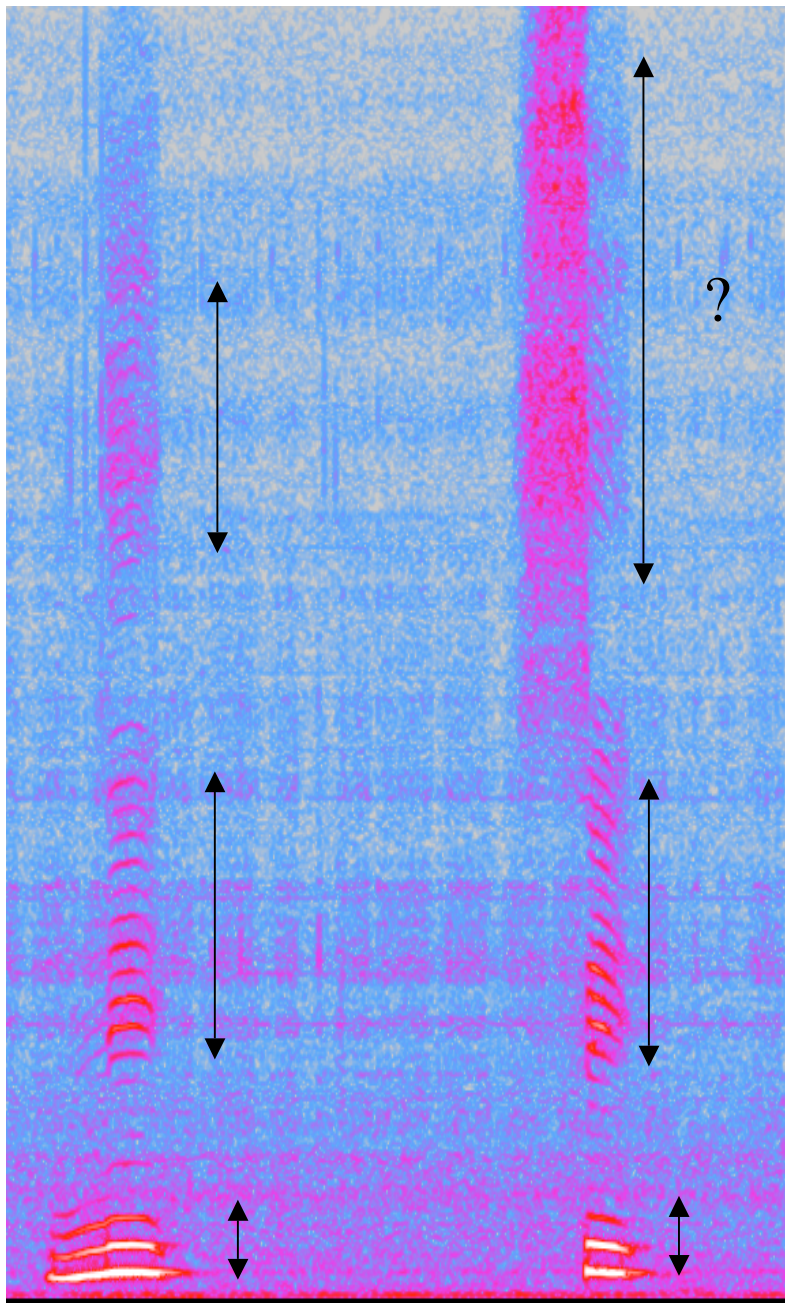


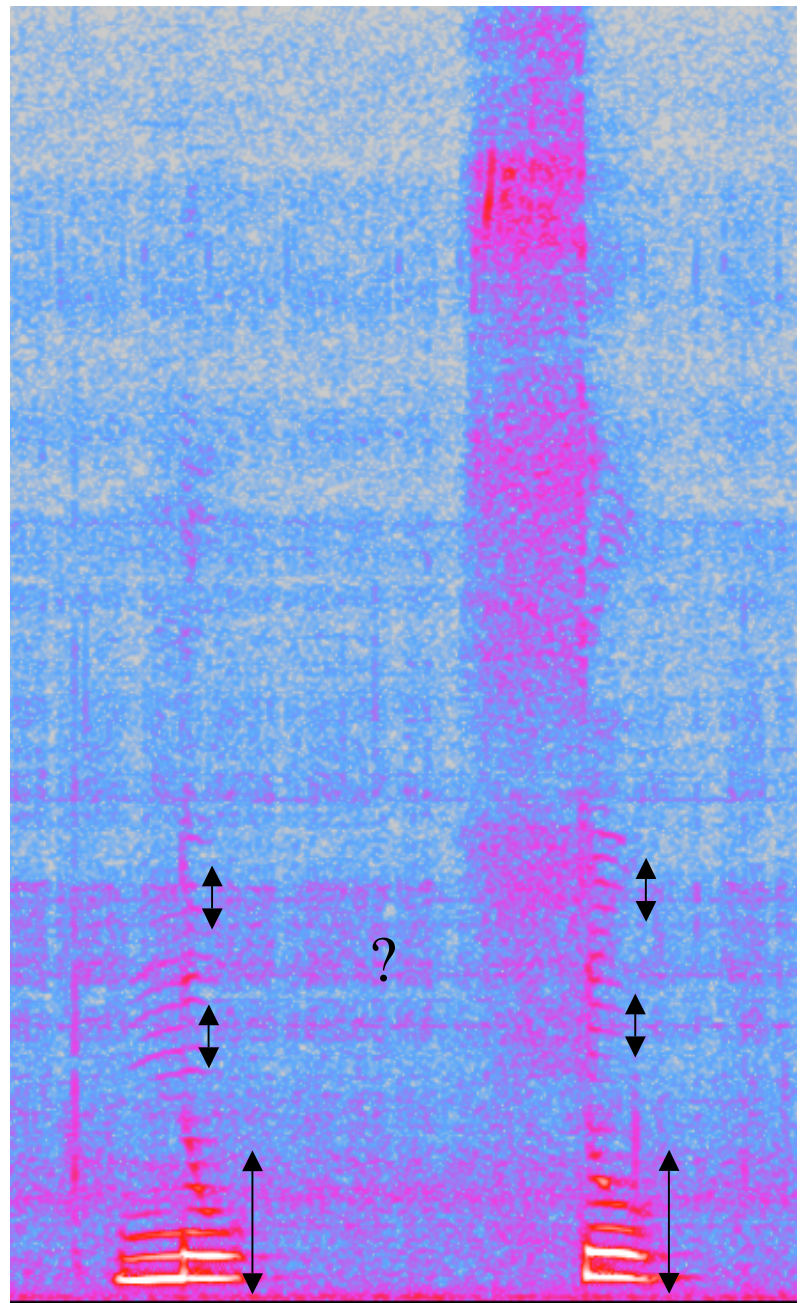
n



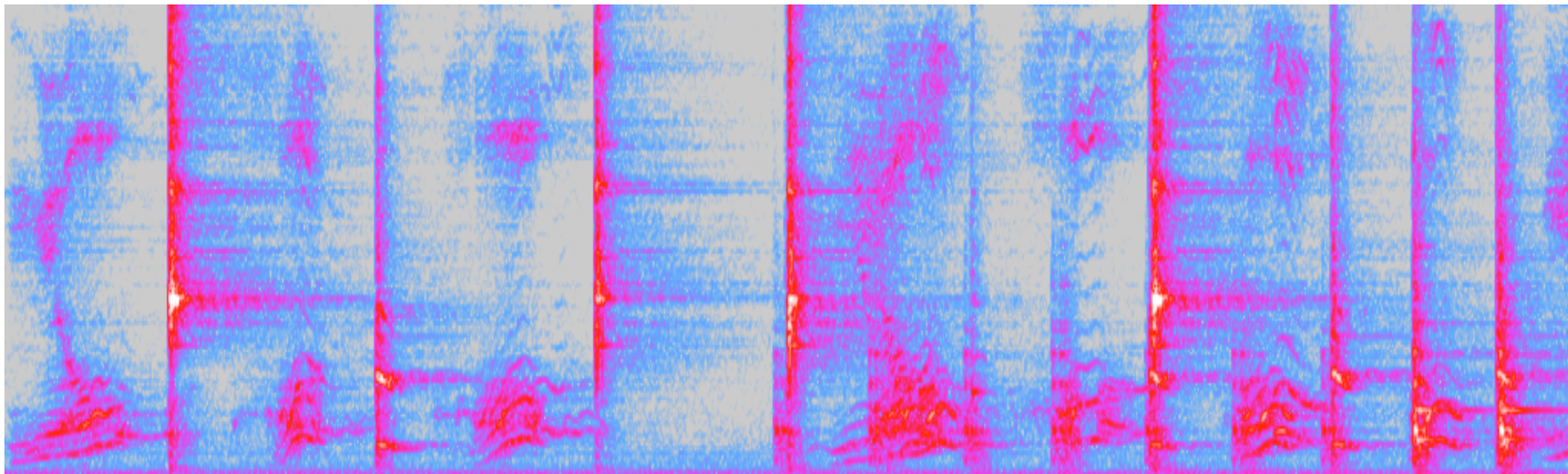
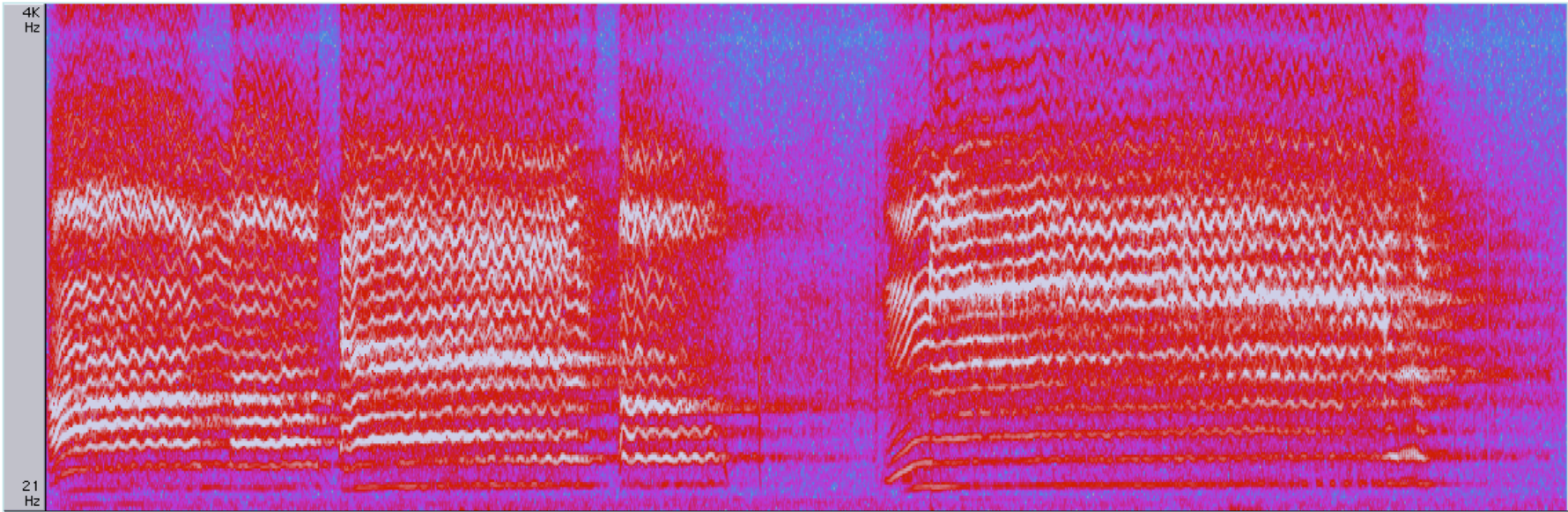
s



n é-----s é



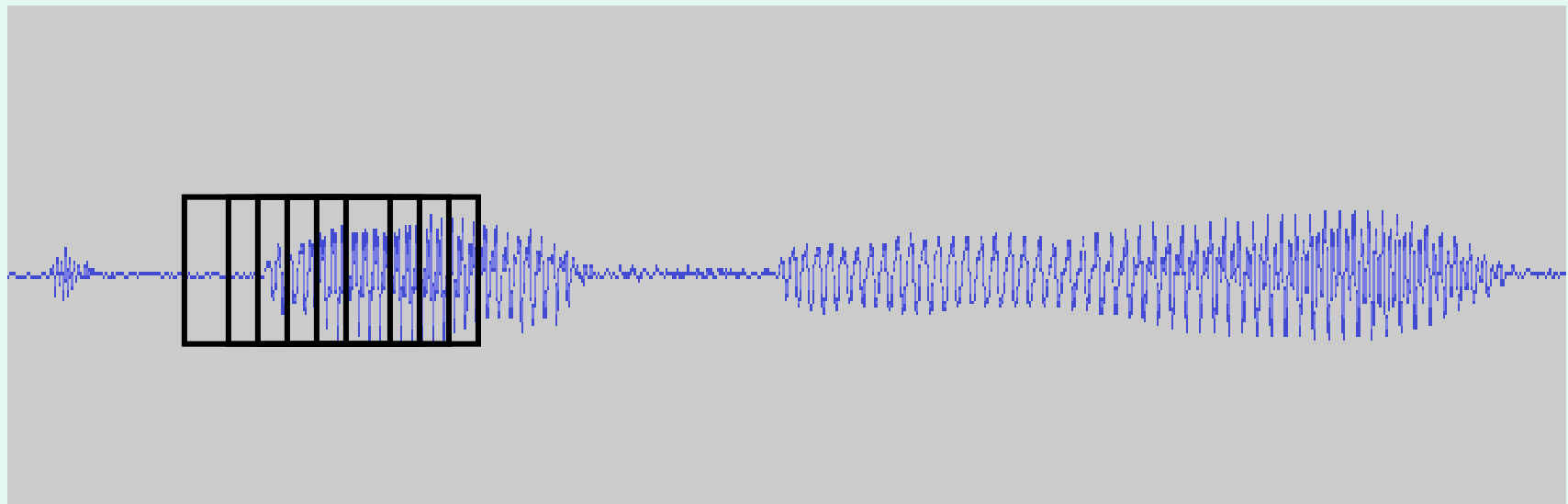
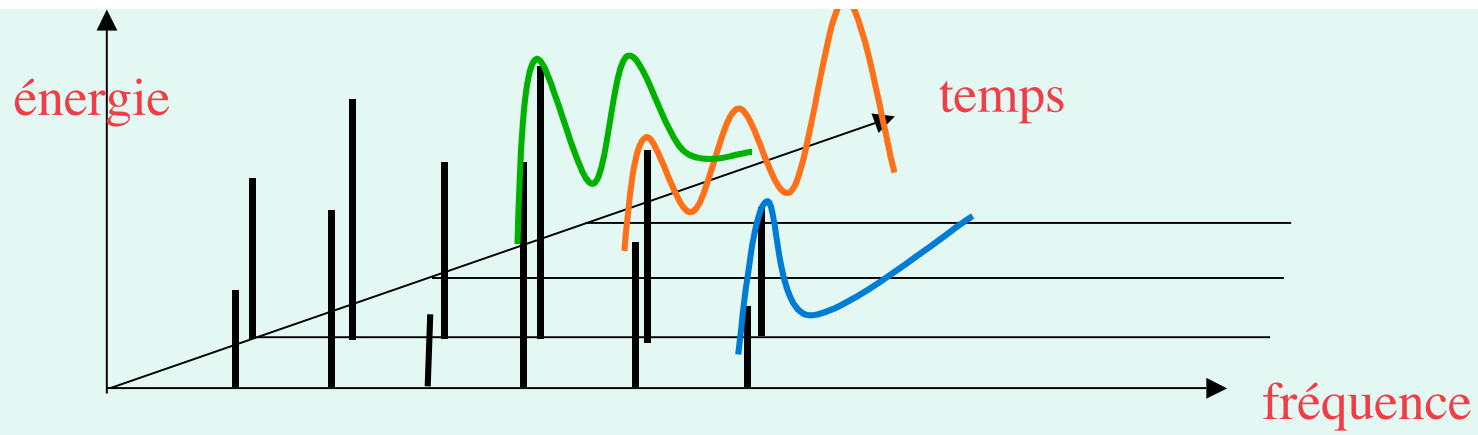
n o-----s o



Ivan Le Terrible

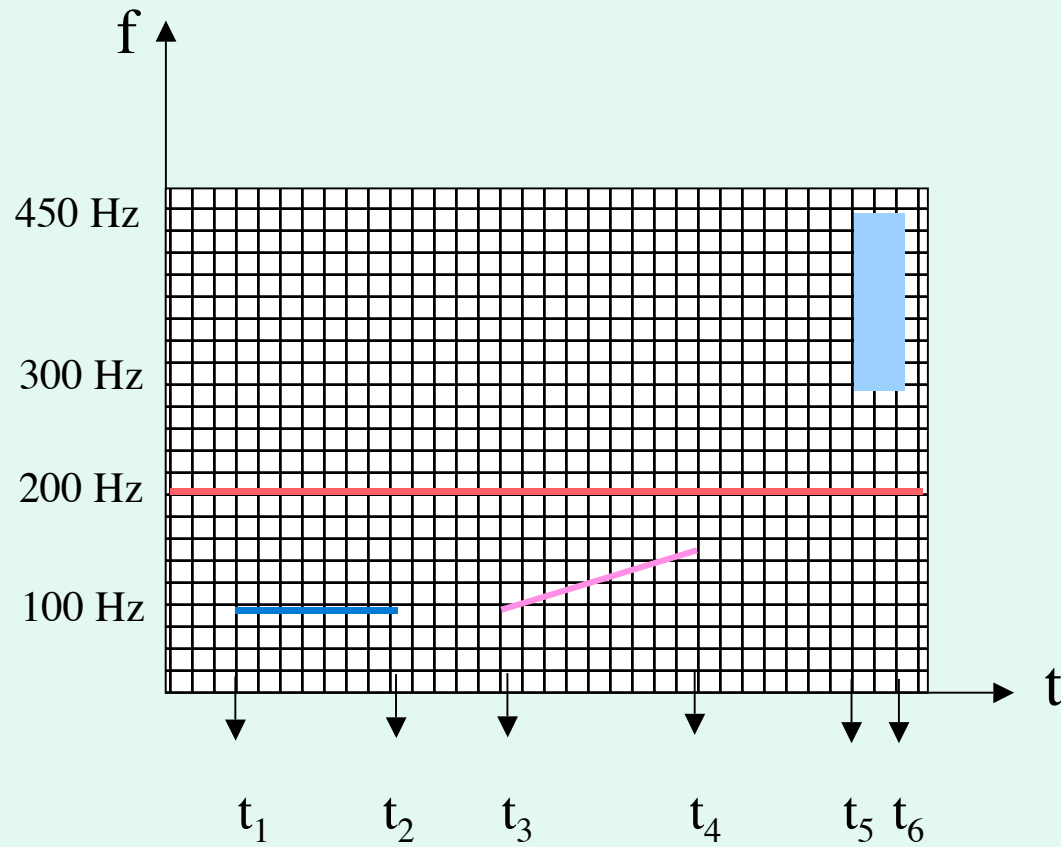
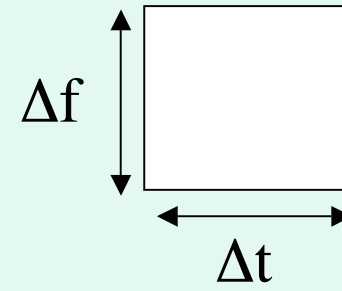
Théâtre No

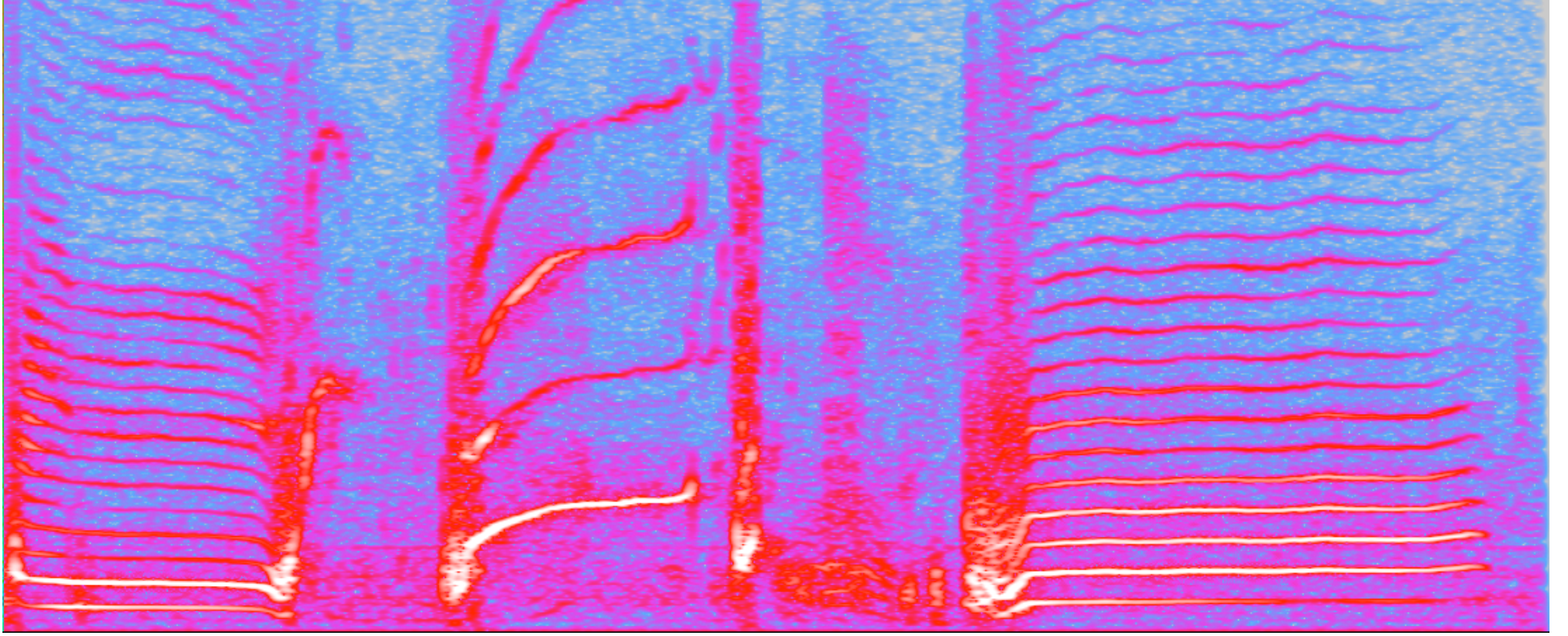




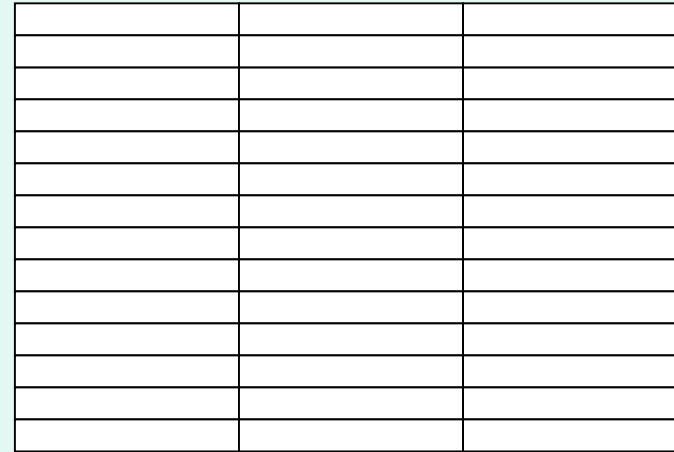
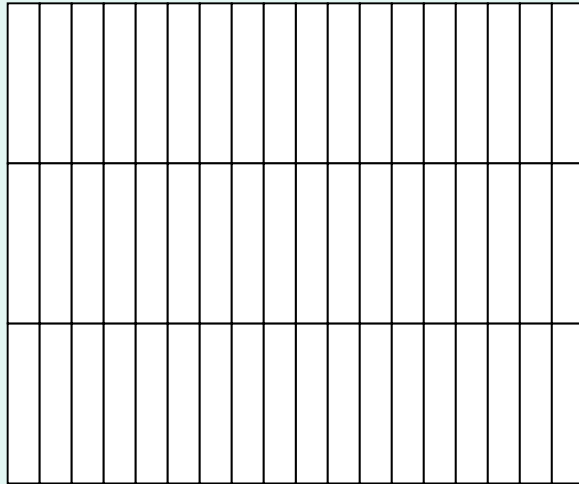
algorithme t/f : quelques notions de base

Importance de la taille de la fenêtre d'analyse





différents pavages du plan t/f



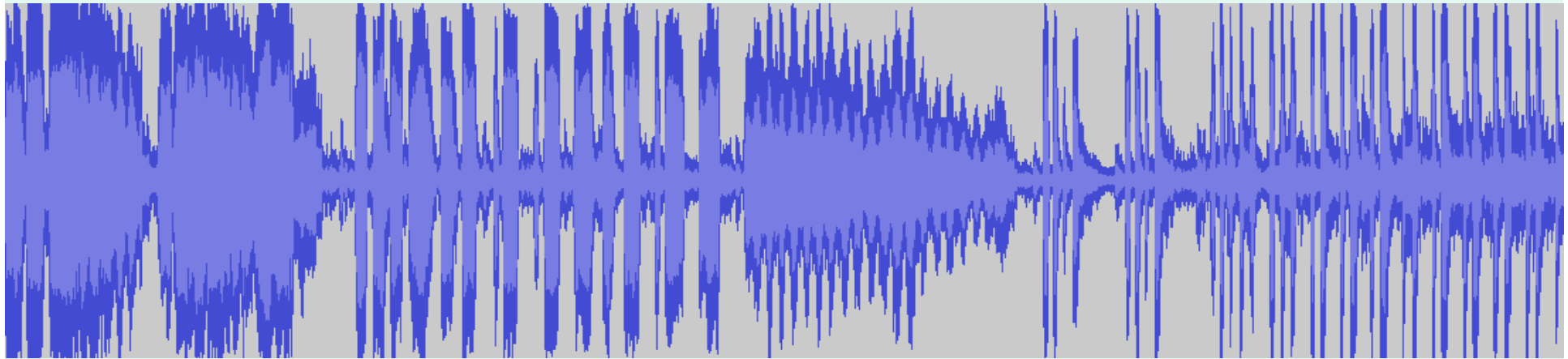
Relation d'incertitude d'Heisenberg/Gabor

$$\Delta t \Delta f \geq 1/2$$

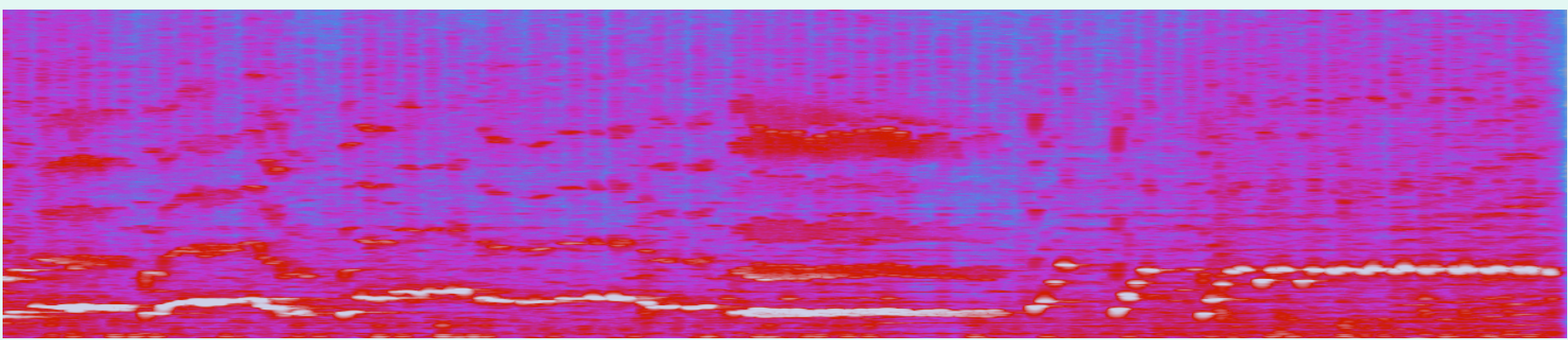
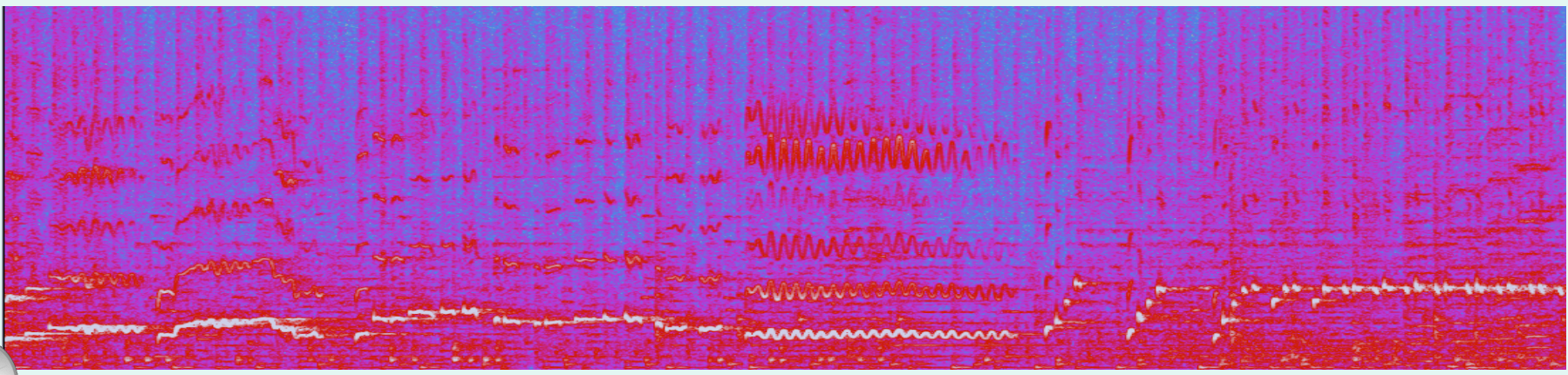
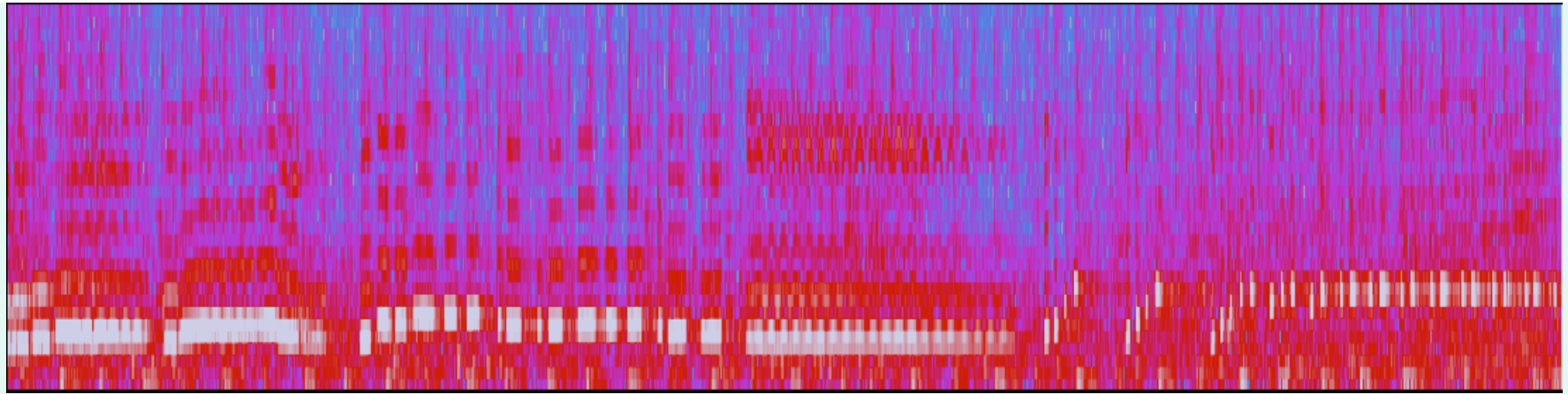
Meilleur compromis temps/fréquence pour une fenêtre gaussienne

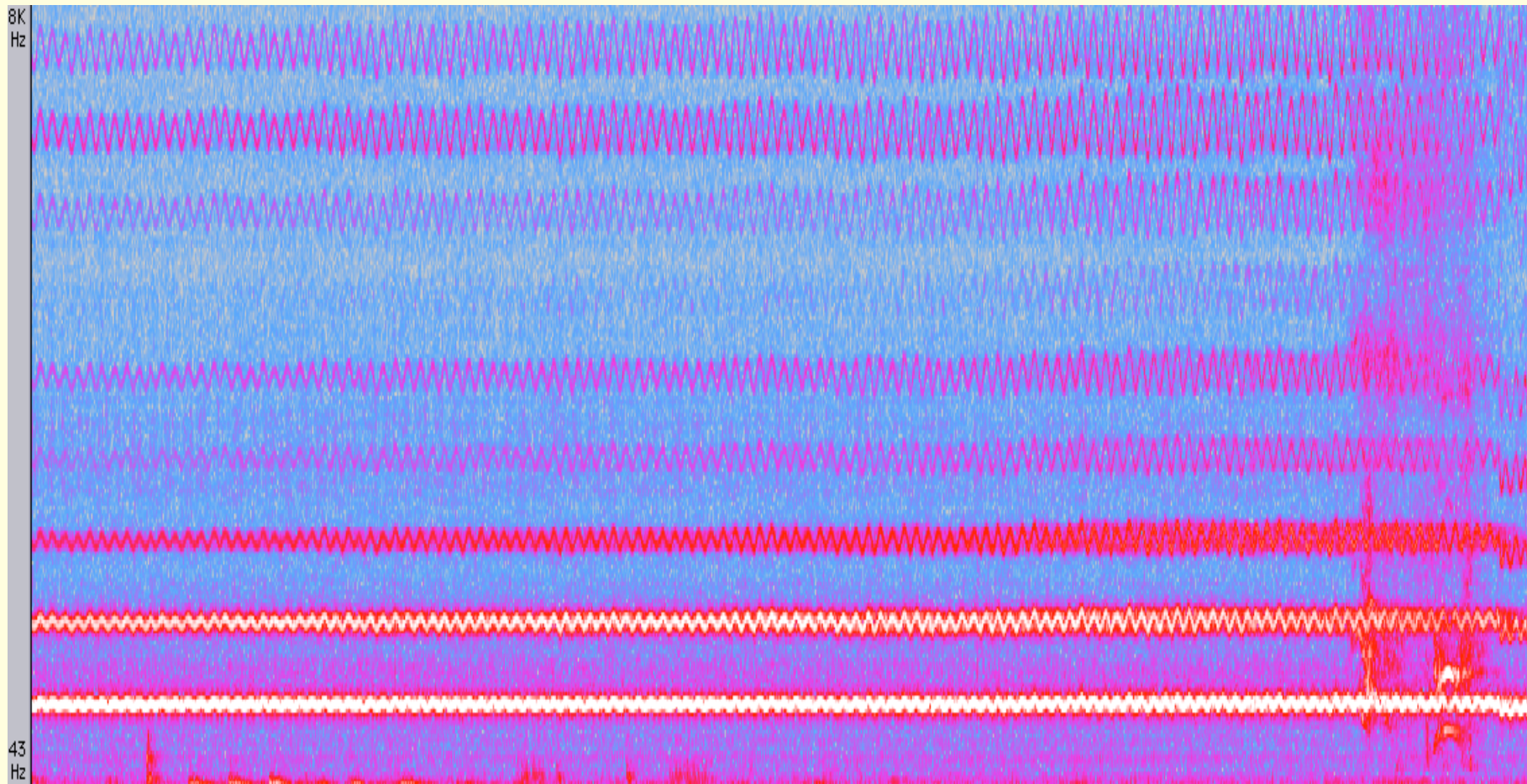
! fenêtre fixée pour toute l'analyse

Le problème du choix de la taille de la fenêtre



Faut-il être précis en temps ou en fréquence?





vibrato « en boucle » (Farinelli)